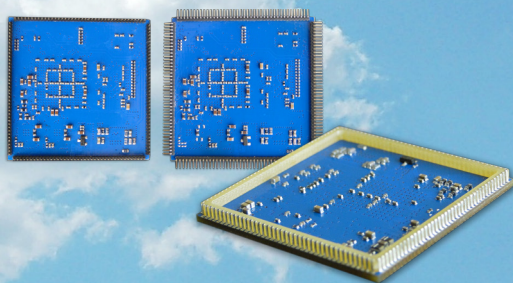


SQM[®]4-VF6

Solderable system-on-module

elnico
...all for embedded

freescale
Connect



- ✓ Dual core – ARM Cortex-A5 and Cortex-M4
- ✓ Four variants of assemblage
- ✓ Unlimited SW possibilities Linux, MQX, ...

For more information please visit our website:

www.sqm4.com

SQM4-VF6

SQM4-VF6 is a solderable processor module based on the new heterogeneous dual-core (ARM Cortex-A5 + ARM Cortex-M4) MCU Freescale Vybrid VF6.

Combination of heterogeneous cores brings great benefits of parallel use of different operating systems, e.g. Linux® on the Cortex-A5 core and an RTOS like MQX™ or a bare-metal code on the Cortex-M4 core.

Dual display controllers support resolutions up to SVGA (800×600) or one display up to XGA (1024×768), with 4-wire resistive touch screens without further controllers.

Dual Ethernet 10/100 MAC with L2 switch and dual USB 2.0 OTG with integrated PHY provide high connectivity and open a huge networking market.

Powerful combination of on-chip encryption, secure boot, anti-tamper and anti-clone capabilities secure sensitive data and critical applications infrastructure.

FEATURES SUMMARY:

CPU:

VF61GS151CMK50 Dual-core 500+167 MHz

Memory:

512 kB L2 Cache
1.5 MB on-chip SRAM
64 MB × 16 DDR3 on module
256 MB × 8 NAND FLASH on module

Interfaces:

TFT LCD ×2
Digital and Analog Video
Audio ASRC, SAI, ESAI, SPDIF
I2C, CAN, UART
SPI, 2×Quad SPI
USB OTG + USB HOST
2×Secure Digital I/O
2×Ethernet + L2 Switch
Tamper Detect, WDOG
12 bit D/A
12 bit A/D high speed
RTC, PWM
Up to 135 GPIO

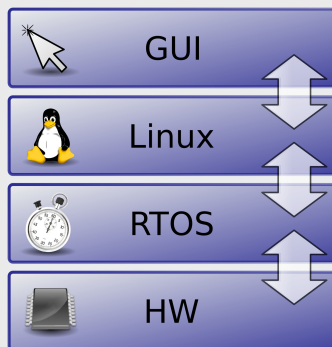
Electrical:

Supply Voltage	3.3 V to 5.5 V DC
Supply Current	220 mA
Output Voltage	3.3 V
Output Current	0 to 500 mA

Operating Conditions:

Temperature	-40°C to +85°C
Ambient Humidity	10 to 90 % RH

Available with EasyBoard Development Kit.



SQM4

solderable system on module

